

THE  
**Ultimate**  
collection COMPOSITE DOORS



the ultimate **composite door**

FEATURING INTELLIGENT TIMBER INSIDE\*



## Door Colour Options

Our colour collection has been specially designed to help you put together the perfect colour palette for your door. Every home is different and our beautiful range of colours combines both muted heritage shades and bolder vibrant options, to harmonise with your home and keep it looking good for years to come.

### Standard Colour Range

Our standard colour options are quite varied and can cover most tastes. Doors are white internally as standard. Oak and Rosewood effects are stained and lacquered.



### Custom Colour Range

Our custom colour options open up a world of choice, painted from the colours shown and guaranteed for 10 years.



Door colours shown are for guidance only and are as accurate as photographic and printing processes allow.

## Frame Options

### Standard PVCu Frame

Our standard frame colours include white PVC-U and woodgrain effect PVCu. The woodgrain effect is achieved with a special foil and is available in a variety of finishes all of which can have the finish to both inside and outside or just to the outside. Finishes include: White PVCu (no foil), Rosewood, Light Oak, Black\*, Anthracite Grey, Cream and White woodgrain.

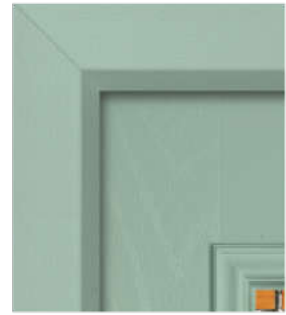
\*The black foil is not a true black and can look dark brown in some light conditions

### Custom Frame

Our custom colours offer the same world of choice as the custom door colour range, in fact they are identical paint finishes. They are applied to a woodgrain effect foil to ensure an authentic look and feel. As a result, we also guarantee the paint finish on our frames for 10 years.



**Standard PVCu Frame**  
Standard smooth PVCu or woodgrain effect foiled frame



**Custom Color Frame**  
Colour-matched to the door with a special foil and paint finish. Different door/frame colours can be chosen to further personalise your door.

## Door Styles



**Dual Glazed**  
Page 4



**Dual Glazed Arch**  
Page 4



**4 Panel Solid**  
Page 4



**Tops & Mids**  
Page 6



**Tops**  
Page 6



**6 Panel Solid**  
Page 6



**Half Moon & Mids**  
Page 8



**Half Moon**  
Page 8



**Half Moon Sunburst**  
Page 8



**Half Glazed**  
Page 10



**Half Glazed Grid**  
Page 10



**Half Glazed Arch**  
Page 12



**Half Glazed Arch Grid**  
Page 12



**3-Quarter Glazed**  
Page 14



**Cottage Diamond**  
Page 16



**Cottage 3 Diamond**  
Page 16



**Cottage Short**  
Page 16



**Cottage Stable**  
Page 16



**Morse**  
Page 18



**Longlite**  
Page 20



**4 Top**  
Page 22



**5 Top Round**  
Page 22



**Porthole**  
Page 24





Door Colour: **Black**

Decorative Glass: **Flair**

Shown  
with matching  
**Black**  
frame



# Dual Glazed

Dual Glazed is one of our most popular designs, for very obvious reasons. The two glass panels offer a stunning feature in a traditional design.



Dual Glazed

Dual Glazed Arch

4 Panel Solid

Door Colour: **Silk Grey**

Decorative Glass: **Dorchester Amber\***



Door Colour: **Red Violet**

Decorative Glass: **Classic**



Door Colour: **Turquoise Blue**

Decorative Glass: **Linear\***



Door Colour: **Traffic Grey**

Decorative Glass: **Elegance**



Door Colour: **Ultramarine Blue**

Decorative Glass: **Kensington\***



Door Colour: **Anthracite Grey**

Decorative Glass: **Reflections\***



Door Colour: **Golden Oak**

Decorative Glass: **Prairie**



Door Colour: **Pastel Turquoise**

Decorative Glass: **Flair**



\* Not available in Dual Glazed Arch.





Door Colour: Turquoise Blue

Decorative Glass: Prairie



# Tops and Mids

Tops and Mids is a variation on one of our most popular designs. Two or four panel glass designs offer varying amounts of light and privacy.



Tops & Mids

Tops

6 Panel Solid

Door Colour: **Cream**

Decorative Glass: **Zinc Star**



Door Colour: **Black**

Decorative Glass: **Classic**



Door Colour: **Sky Blue**

Decorative Glass: **Prairie**



Door Colour: **Purple Violet**

Decorative Glass: **Reflections**



Door Colour: **Duck Egg**

Decorative Glass: **Kensington**



Door Colour: **Pastel Violet**

Decorative Glass: **Dorchester Amber**







Door Colour: **Rosewood**

Decorative Glass: **Classic**



# Half Moon and Mids

Half Moon variants are a truly traditional design. The half moon feature is an elegant feature which is chosen for its smooth lines.



Half Moon & Mids    Half Moon    Half Moon Sunburst

Door Colour: **Pastel Blue**

Decorative Glass: **Dorchester Blue**



Door Colour: **Traffic Grey**

Decorative Glass: **Classic**



Door Colour: **Golden Oak**

Decorative Glass: **Prairie**



Door Colour: **Ultramarine Blue**

Decorative Glass: **Kensington**



Door Colour: **Chartwell Green**

Decorative Glass: **Reflections**



Door Colour: **Silk Grey**

Decorative Glass: **Zinc Star**







Door Colour: Mouse Grey

Decorative Glass: Kensington



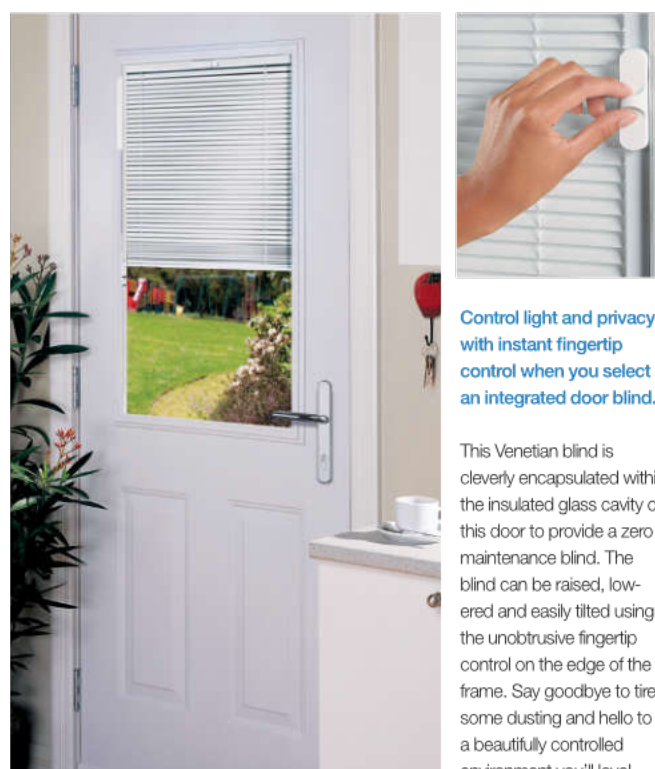
# Half Glazed

Traditionally chosen as a back door design, modern glass styles can also let light flood into the front of your home. The Grid option is used with clear or patterned glass and the blind system is perfect for back door privacy.



Half Glazed

Half Glazed Grid

Door Colour: **Duck Egg**Decorative Glass: **Reflections**Door Colour: **Rosewood**Decorative Glass: **Elegance**Door Colour: **Anthracite Grey**Decorative Glass: **Simplicity**Door Colour: **Turquoise Blue**Decorative Glass: **Kensington**Door Colour: **Green**Decorative Glass: **Linear**Door Colour: **White**Decorative Glass: **Venetian Blind**

Control light and privacy with instant fingertip control when you select an integrated door blind.

This Venetian blind is cleverly encapsulated within the insulated glass cavity of this door to provide a zero maintenance blind. The blind can be raised, lowered and easily tilted using the unobtrusive fingertip control on the edge of the frame. Say goodbye to tiresome dusting and hello to a beautifully controlled environment you'll love!





Door Colour: Light Grey

Decorative Glass: Simplicity

Shown  
with matching  
Light Grey  
frame



# Half Glazed Arch

The Half Glazed Arch is a stunning variation on the Half Glazed design. Providing lots of light and with a Grid option that creates a very distinctive look.



Half Glazed Arch Half Glazed Arch Grid

Door Colour: **Cream**

Decorative Glass: **Reflections**



Door Colour: **Anthracite Grey**

Decorative Glass: **Elegance**



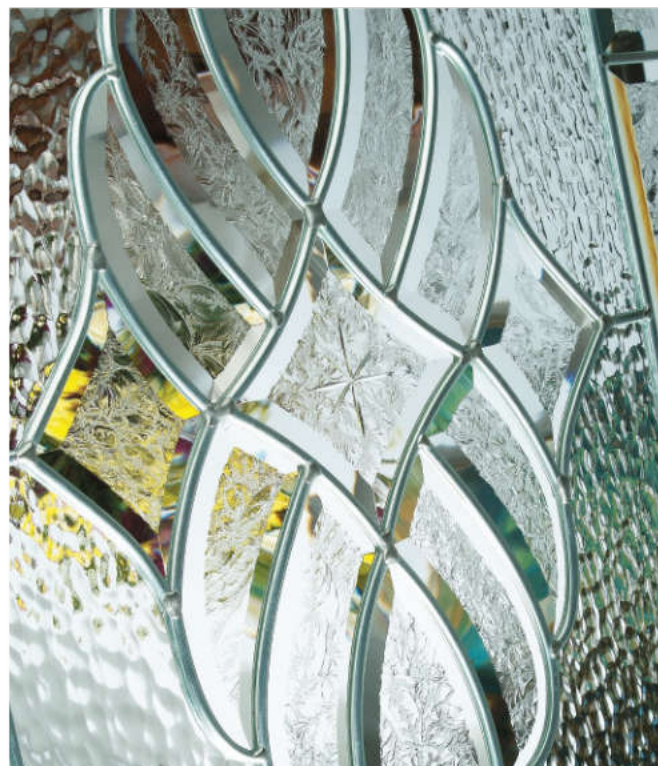
Door Colour: **Traffic Grey**

Decorative Glass: **Simplicity**



Door Colour: **Silk Grey**

Decorative Glass: **Kensington**



Door Colour: **Purple Violet**

Decorative Glass: **Classic**



Door Colour: **Blue**

Decorative Glass: **Zinc Star**







Door Colour: Cream

Decorative Glass: Reflections

Shown  
with  
contrasting  
Black  
frame



## 3-Quarter Glazed

The 3-Quarter door design has a feel of Art Deco. Stunning long glass designs make a real showcase for your home.

Door Colour: **Black**

Decorative Glass: **Reflections**



Door Colour: **Red**

Decorative Glass: **Simplicity**



Door Colour: **Golden Oak**

Decorative Glass: **Prairie**



Door Colour: **Traffic Grey**

Decorative Glass: **Havana**



Door Colour: **Pastel Turquoise**

Decorative Glass: **Symphony**



Door Colour: **Chartwell Green**

Decorative Glass: **Kensington**







Door Colour: **White**

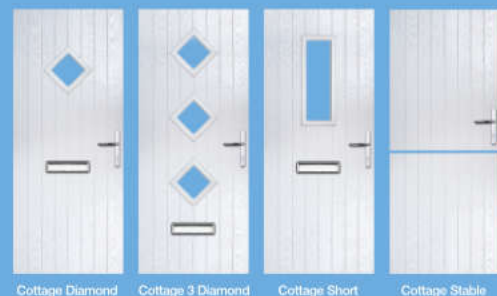
Decorative Glass: **Bullseye**

Shown  
with  
**Stable Door**  
option



# Cottage

Cottage door designs are some of our most popular. Suitable for both front and back doors, designs are flexible, traditional as well as contemporary.



Cottage Diamond

Cottage 3 Diamond

Cottage Short

Cottage Stable

Door Colour: **Light Grey**

Decorative Glass: **Simplicity**



Door Colour: **Purple Violet**

Decorative Glass: **Kensington**



Door Colour: **Turquoise Blue**

Decorative Glass: **Dorchester**



Door Colour: **Black**

Decorative Glass: **Bullseye**



Door Colour: **Chartwell Green**

Decorative Glass: **Dorchester Green**



Door Colour: **Golden Oak**

Decorative Glass: **Kensington**



Door Colour: **Cream**

Decorative Glass: **Prairie**



Door Colour: **Rosewood**

Decorative Glass: **Classic**







Door Colour: Anthracite Grey

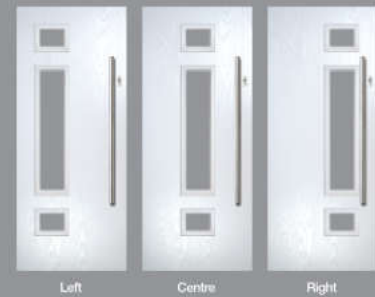
Decorative Glass: Tahoe Black

Shown  
with matching  
Anthracite  
Grey  
frame



# Morse

Morse is a stunning contemporary design. Timeless elegance is enhanced with beautiful glass designs to create a very modern feel.



Door Colour: **Purple Violet**

Decorative Glass: **Kensington**



Door Colour: **Cream**

Decorative Glass: **Reflections**



Door Colour: **Duck Egg**

Decorative Glass: **Tahoe Black**



Door Colour: **Black**

Decorative Glass: **Zinc Star**



Door Colour: **Light Grey**

Decorative Glass: **Pinpoint**



Door Colour: **Turquoise Blue**

Decorative Glass: **Symphony**



Door Colour: **Mouse Grey**

Decorative Glass: **Classic**



Door Colour: **Ultramarine Blue**

Decorative Glass: **Matrix**



Doors shown have the following upgrades: 1200mm Stainless Pull Bar Handle, Winkhaus Heritage Auto Lock complete with Escutcheon





Door Colour: **Silk Grey**

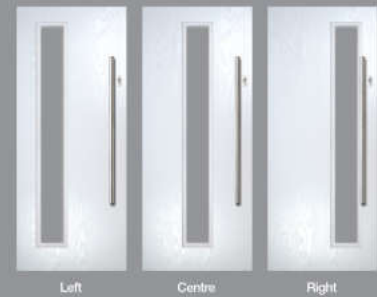
Decorative Glass: **Symphony**

Shown  
with  
contrasting  
**Black**  
frame



# Longlite

Longlite is a bold and contemporary statement.  
A discerning choice for the modernist.



Door Colour: **Black**  
Decorative Glass: **Reflections**



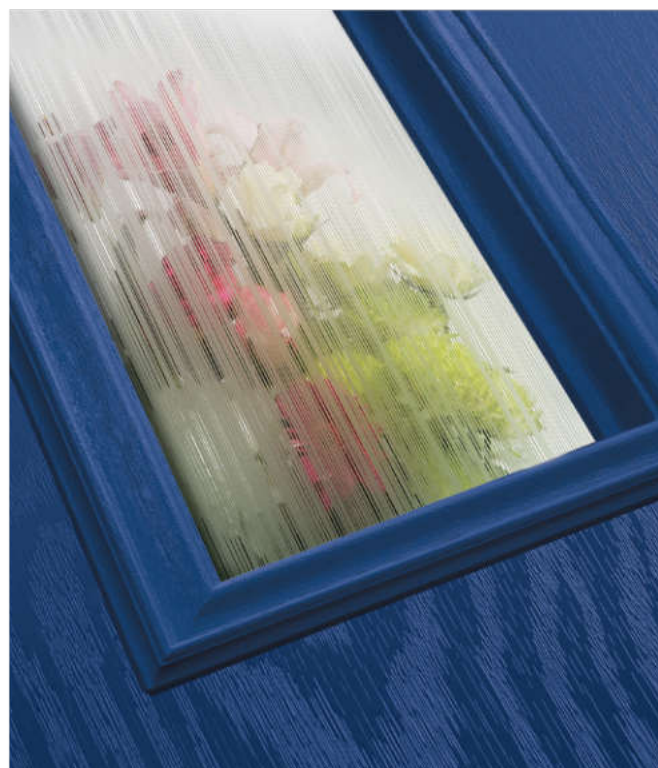
Door Colour: **Turquoise Blue**  
Decorative Glass: **Prairie**



Door Colour: **Anthracite Grey**  
Decorative Glass: **Matrix**



Door Colour: **Traffic Red**  
Decorative Glass: **Linear**



Door Colour: **Ultramarine Blue**  
Decorative Glass: **Millennium**



Door Colour: **Traffic Grey**  
Decorative Glass: **Symphony**



Doors shown have the following upgrades: 1200mm Stainless Pull Bar Handle, Winkhaus Heritage Auto Lock complete with Escutcheon





Door Colour: **Turquoise Blue**

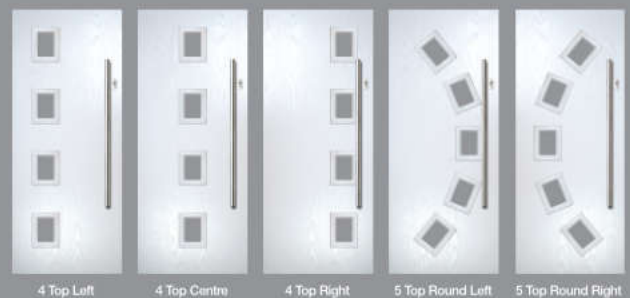
Decorative Glass: **Millennium**

Shown  
with matching  
**Turquoise  
Blue**  
frame



## 4 Top / 5 Top

Our 4 and 5 Top designs are truly individual.  
Creative yet beautiful, your choice can match  
your personality.



Door Colour: **Purple Violet**

Decorative Glass: **Reflections**



Door Colour: **Silk Grey**

Decorative Glass: **Matrix**



Door Colour: **Anthracite Grey**

Decorative Glass: **Modena**



Door Colour: **Sky Blue**

Decorative Glass: **Prairie**



Door Colour: **Cream**

Decorative Glass: **Finesse**



Door Colour: **Chartwell Green**

Decorative Glass: **Kensington**



Door Colour: **Traffic Grey**

Decorative Glass: **Millennium**



Door Colour: **Black**

Decorative Glass: **Abstract**



Doors shown have the following upgrades: 1200mm Stainless Pull Bar Handle, Winkhaus Heritage Auto Lock complete with Escutcheon





Door Colour: **Chartwell Green**

Decorative Glass: **Abstract**

Shown  
with matching  
**Chartwell  
Green**  
frame



# Porthole

Porthole is an ultra-modern design. Not for the faint-hearted, it makes a real difference to the look and feel of any property.

Door Colour: **Pastel Turquoise**

Decorative Glass: **Reflections**



Door Colour: **Cream**

Decorative Glass: **Prairie**



Door Colour: **Vermilion**

Decorative Glass: **Abstract**



Door Colour: **Pastel Violet**

Decorative Glass: **Classic**



Door Colour: **Duck Egg**

Decorative Glass: **Kensington**



Door Colour: **Anthracite Grey**

Decorative Glass: **Zinc Star**



Doors shown have the following upgrades: 600mm Stainless Pull Bar Handle, Winkhaus Standard Auto Lock complete with Escutcheon



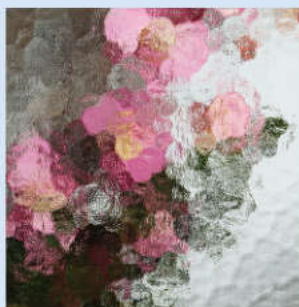
## Composite Side Panels

Side panels can add the ultimate finishing touch to a grand entrance. Your installer will be able to advise on sizes and limitations on configurations and designs. All of our colour options can be applied to both side panels and frames.



## Textured Glass Options

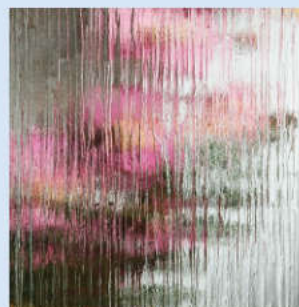
All our door styles are also available in a standard range of four carefully selected patterned glass options. Pilkington textures are also available by special order.



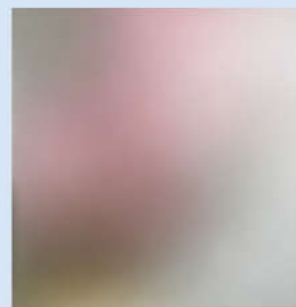
Cathedral



Pinpoint



Rain



Satin

## Decorative Glass Colour Options



Dorchester Amber

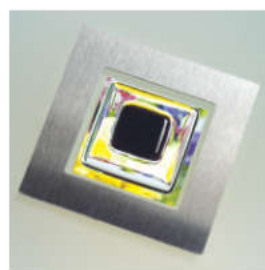


Dorchester Blue

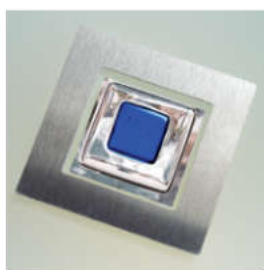


Dorchester Green

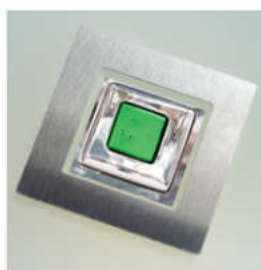
With our Dorchester and Tahoe glass designs, you can choose to co-ordinate the glass design colour to complement or contrast with your choice of door colour.



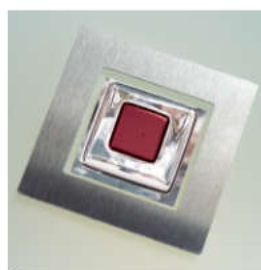
Tahoe Black



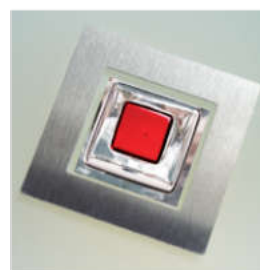
Tahoe Blue



Tahoe Green



Tahoe Purple



Tahoe Red



## Door Hardware

For the ultimate in bespoke doors and for the more discerning buyer, we offer our fully suited collection of top quality handles, letterboxes and door knockers in a range of colours. Spy holes, letters and numerals are also available.



Pad Handle



Centre Pull



White



Black



Satin Silver



Polished Gold



Polished Chrome



Contemporary Knocker



Available with or without Spyhole Viewer



Slimline Urn Knocker



Urn Knocker



Door Pull



Escutcheon



Numerals and Letters

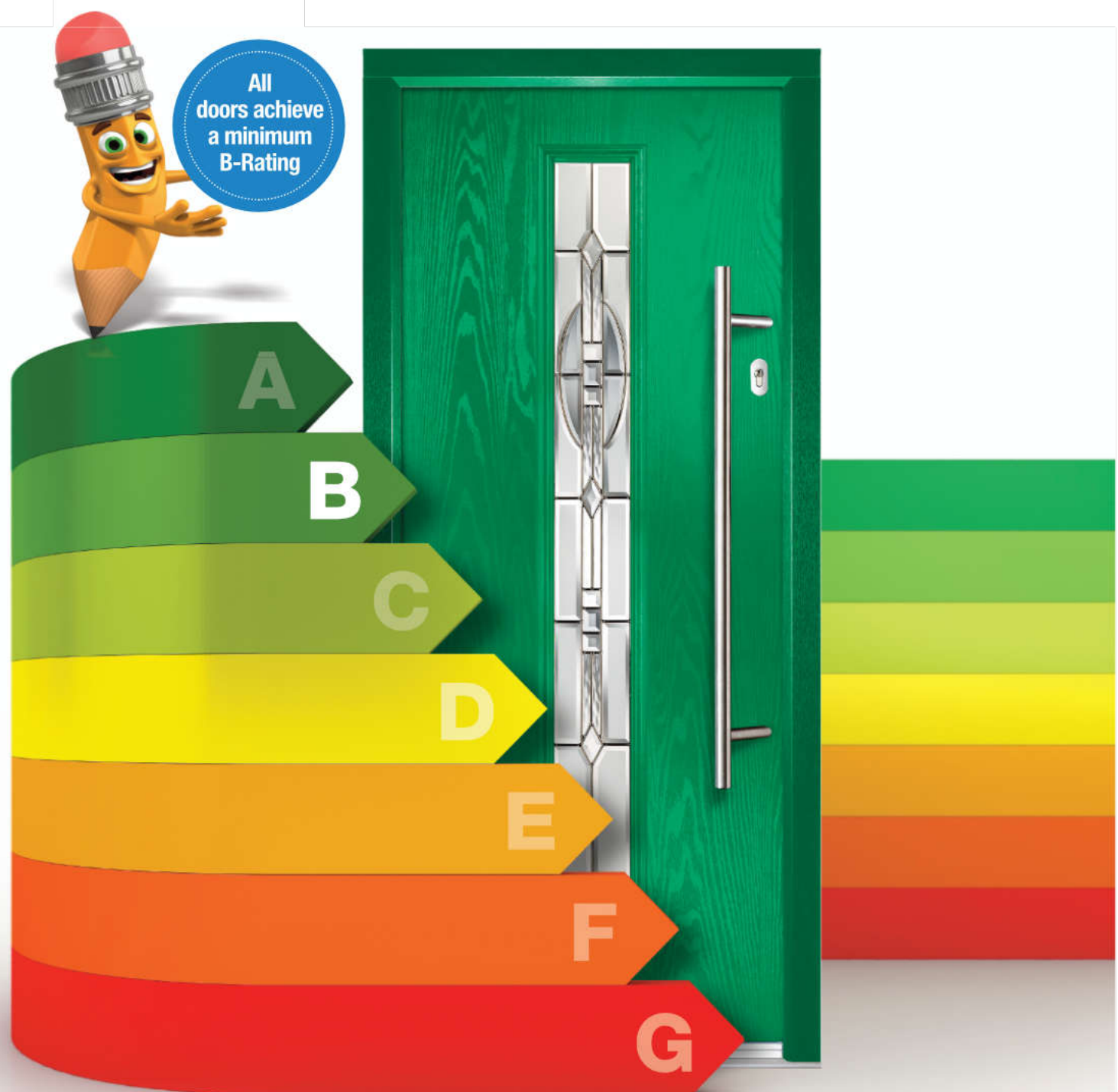


Inline and Offset Pull Handles

Available in lengths from 400mm to 1800mm



## Thermal Performance



An Ultimate Collection door is more energy efficient than either a traditional door, a PVC panelled door, or a solid timber composite door. Quite simply our Ultimate Collection doors outperform all of these alternatives, old and modern, as our state-of-the-art core design creates doors which are stronger, more secure and more energy efficient.

Ultimate Collection doors exceed the requirements of current Building Regulations for both U values and Energy Ratings.

And Our Intelligent Timber Inside® technology means unlike solid timber doors an Ultimate Collection door will not, split warp or crack.



**UltimateStainless**

**tough enough  
to deal with the most  
extreme elements**



## **25 year door furniture surface finish guarantee**

We're rolling out a 25 year surface finish and 10 year mechanical guarantee across our Ultimate composite door furniture.

Independently tested far beyond industry standard performance tests, our stainless steel hardware surface coating technology is guaranteed to deliver exceptional surface finish stability for 25 years - even in coastal areas.





## Care and Maintenance

### Caring For Your New Composite Door

You have chosen a high quality GRP Composite Door that is incredibly durable and easy to maintain. Regular cleaning will ensure it always looks its best. Here is how to care for each part of your new door:

**1. Glass:** Clean with glass cleaning liquid or warm soapy water and a soft cloth or sponge. Avoid abrasive pads and solvents.

**2. Frames and Panels:** These can be easily cleaned with warm soapy water and a soft cloth or sponge. Do not use abrasive pads or solvents as these may scratch or damage the surface.

**3. Locks, Hinges and Hardware:** Hardware can be cleaned with mild soapy water and a soft cloth. Avoid abrasive pads, solvents or strong polish as they may scratch or damage the hardware. For a smooth opening, lightly oil or lubricate moving parts once or twice a year.



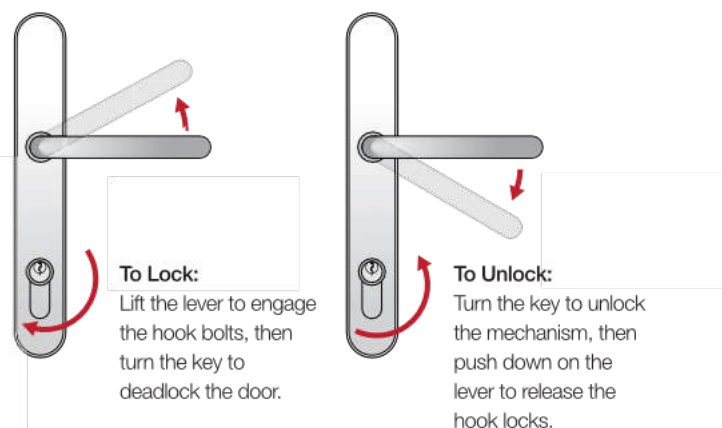
**Note:** Composite doors are structurally sound and will not bow as a result of any water ingress. However, in order to maintain the door and prevent your door from bowing throughout its long life, the hook locks should always be engaged in their keeps when the door is closed. Failure to engage the locks and close the door on the centre latch only can induce a bow over time. Failure to engage the hooks will therefore invalidate the guarantee against bowing.

### Locking & Unlocking Your Composite Door

**1. Locking the Door:** Close the door and lift the lever upward. This action will project the compression bolts and hooks into their respective keeps. Rotate the key one revolution. The door is now fully weathered and secure.

**2. Unlocking Lever / Lever Handle Door:** Insert the key in the cylinder and rotate one revolution. Next, push the lever down to fully retract the compression hooks and bolts, the latch will automatically retract when the lever is depressed. The procedure is the same for internal and external operation.

**3. Unlocking Lever / Lever Off-Set Handle Door:** To unlock the door from inside when a lever / lever offset handle is fitted; simply follow the procedure as in point 2 above. To unlock the door from outside, insert the key and rotate, this will unlock the gearing. Depress the lever, which will withdraw the compression bolts and hooks, the latch will not operate at this point. To gain access, simply turn the key again in the same direction as to unlock the gearing, the latch will remain withdrawn whilst you hold the key in the rotated position.



**Optimum Security:** Optimum security can only be achieved when both compression bolts and hooks are engaged in their respective keeps and the gearing is deadlocked with the key. Closing the door when using the lever / offset lever handle will provide an instant security benefit but this does not constitute high security locking of the system. To ensure the total benefits of the locking system are employed, follow the operation instructions set out opposite.

### Stable Door Operation

The below instructions are for stable doors only.

The top half of a stable door operates in the same way as a standard door. However, the cylinder is fitted to both the top and bottom door as a thumb-turn so there is no key. The top and bottom doors are connected with a rack bolt. This has a thumb-turn operation that is turned through two revolutions to lock and two opposite revolutions to release. When locking the top and bottom doors together it is necessary to hold them both firm against the centre seals so that the rack bolt and keep line up.





## Notes



THE  
**Ultimate**  
collection COMPOSITE DOORS